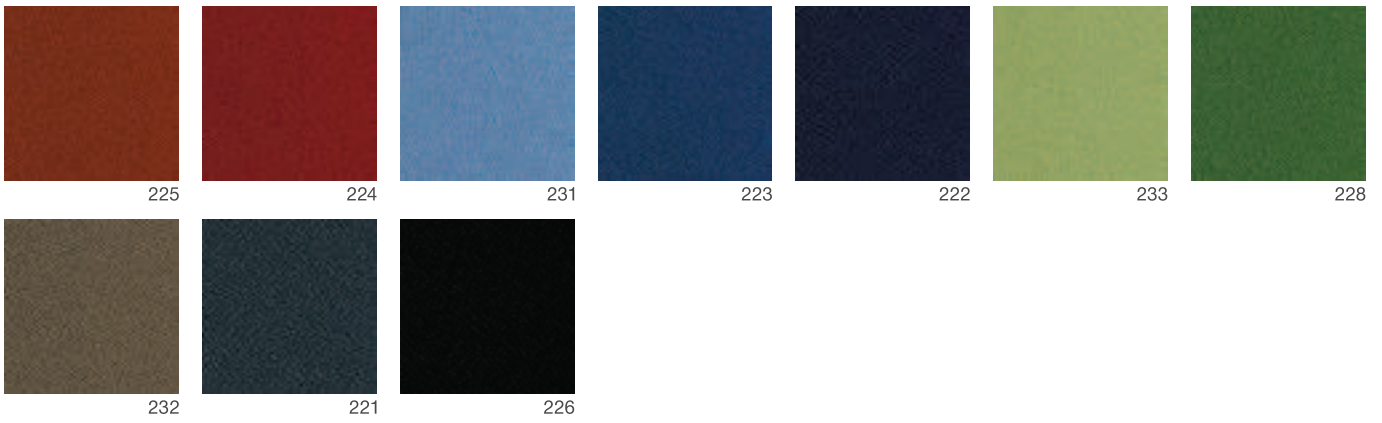


P/BONDAI



100% polyester / Abrasion resistance 100.000 Martindale
Flammability EN 1021/1 - 2, BS 7176 : 1995 medium hazard



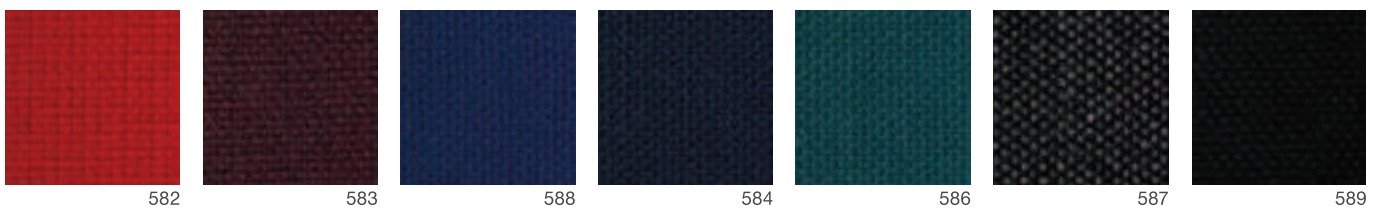
A/ADVANTAGE



30% wool, 70% polyester / Abrasion resistance 90.000 Martindale
Flammability EN 1021 - 1 : 2006, EN 1021 - 2 : 2006,
BS 7176 : 1995 low hazard



5
YEAR GUARANTEE



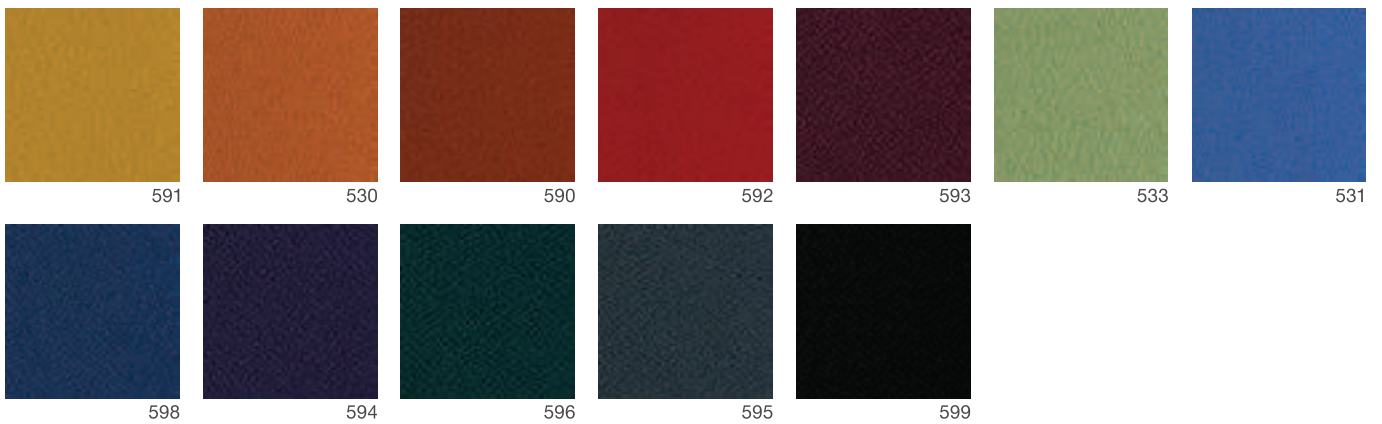
A/PHOENIX



100% polyester / Abrasion resistance 100.000 Martindale
Flammability EN 1021 - 1 : 2006, EN 1021 - 2 : 2006, BS 7176 : 2007 low hazard



5
YEAR GUARANTEE



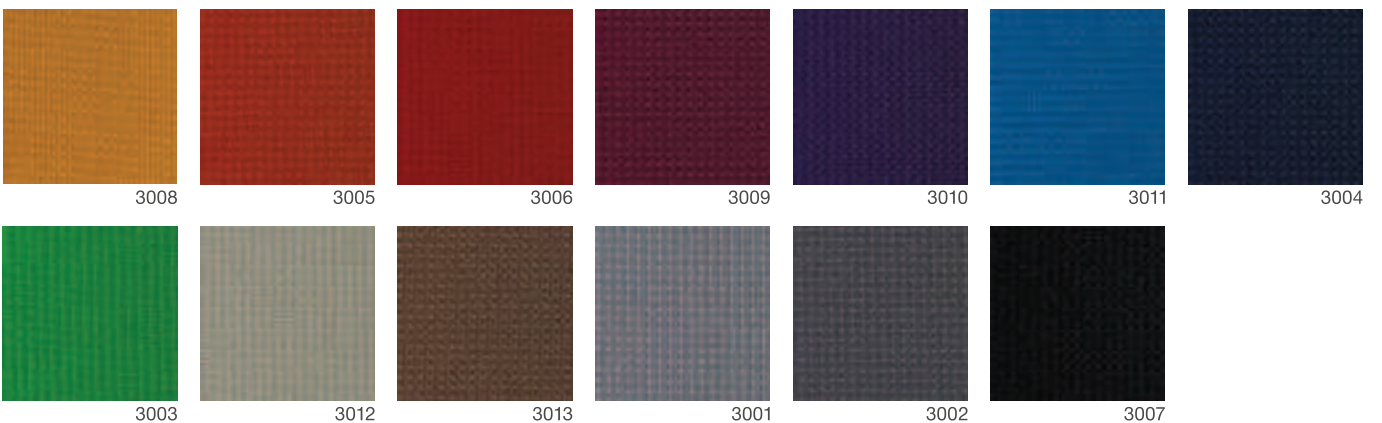
B/URBAN PLUS



100% Xtreme FR / Abrasion resistance 90.000 Martindale
Flammability EN 1021 - 1 : 2006, EN 1021 - 2 : 2006,
BS 7176 : 2007 low hazard, BS 7176 : 2007 medium hazard



5
YEAR GUARANTEE





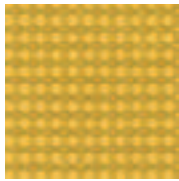
5
YEAR GUARANTEE



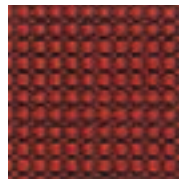
100% polyester Trevira CS / Abrasion resistance
100.000 Martindale / Flammability EN 1021/1 - 2,
BS 7176 medium hazard



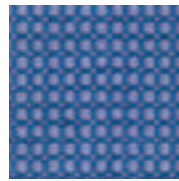
RELAX BICO/B



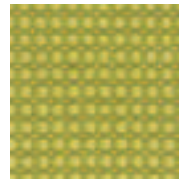
3032



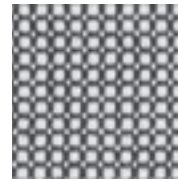
3031



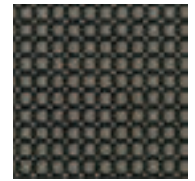
3033



3034



3037



3035



5
YEAR GUARANTEE

95% wool, 5% polyamide / Abrasion resistance 200.000 Martindale
Flammability EN 1021 p1&2, BS 5852, crib 5



FAME/C



4150



4151



4152



4153



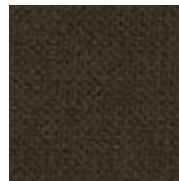
4154



4155



4156



4157



4158



4159



5
YEAR GUARANTEE



100% Trevira CS / Abrasion resistance 100.000 Martindale
Flammability EN 1021 1&2, BS 5852, Crib 5,
BS 7176 medium hazard



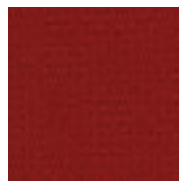
STEP/C



4207



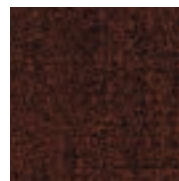
4208



4209



4205



4206



4210



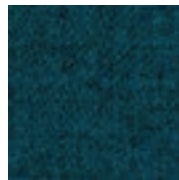
4213



4214



4211



4212



4215



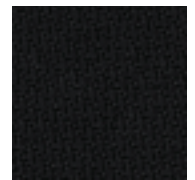
4204



4202



4203



4201

80% polyester, 20% cotton / Abrasion resistance 50.000 Martindale



ARCA/C



4063



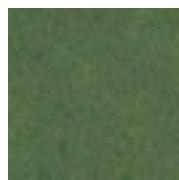
4060



4066



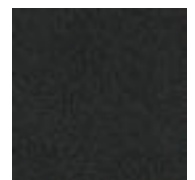
4061



4064



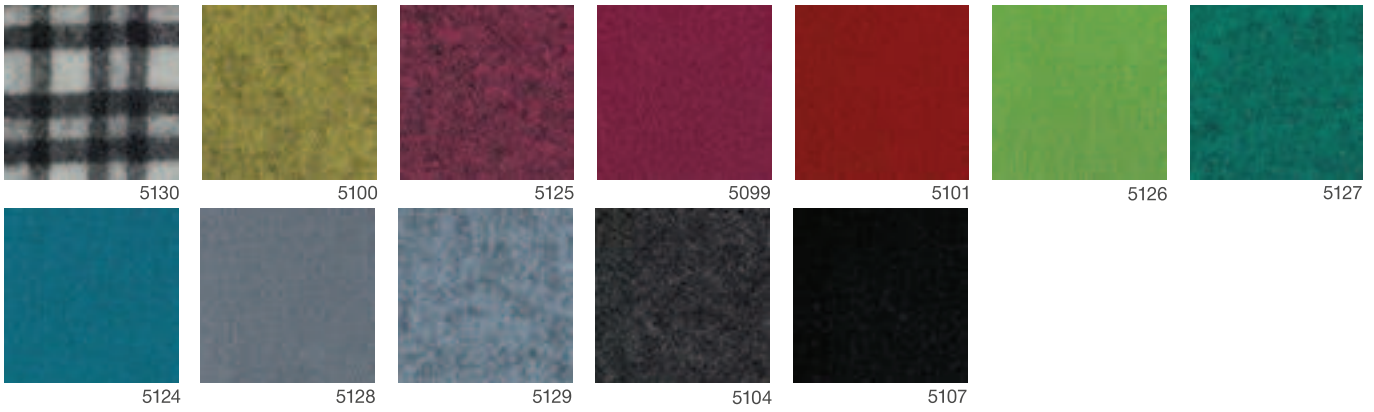
4062



4067

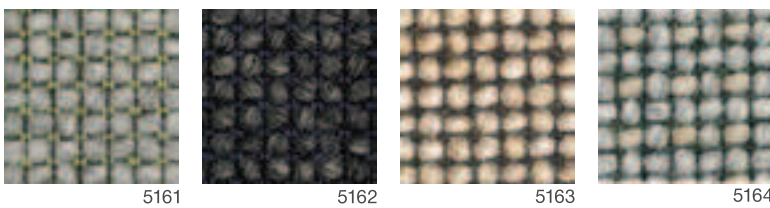
D/BLAZER

100% wool / Abrasion resistance 50.000 Martindale
 Flammability EN 1021 - 1 : 2006, EN 1021 - 2 : 2006, BS 7176 : 2007
 low hazard, BS 7176 : 2007 medium hazard



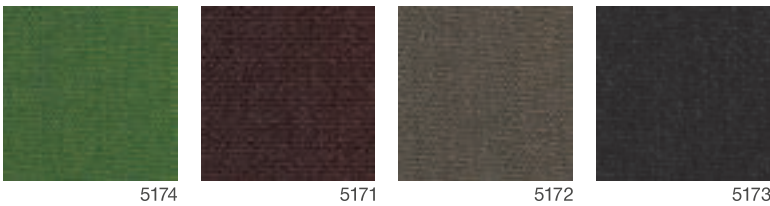
D/CRAGGAN

97% pure new wool, 3% FR viscose / Abrasion resistance 50.000
 Martindale / Flammability BS EN 1021 - 1 : 2006, BS EN 1021 - 2 : 2006,
 BS EN 7176 : 2007 low hazard, BS 5852 : 2006 section 4 ignition
 source 5, BS 7176 : 2007 medium hazard



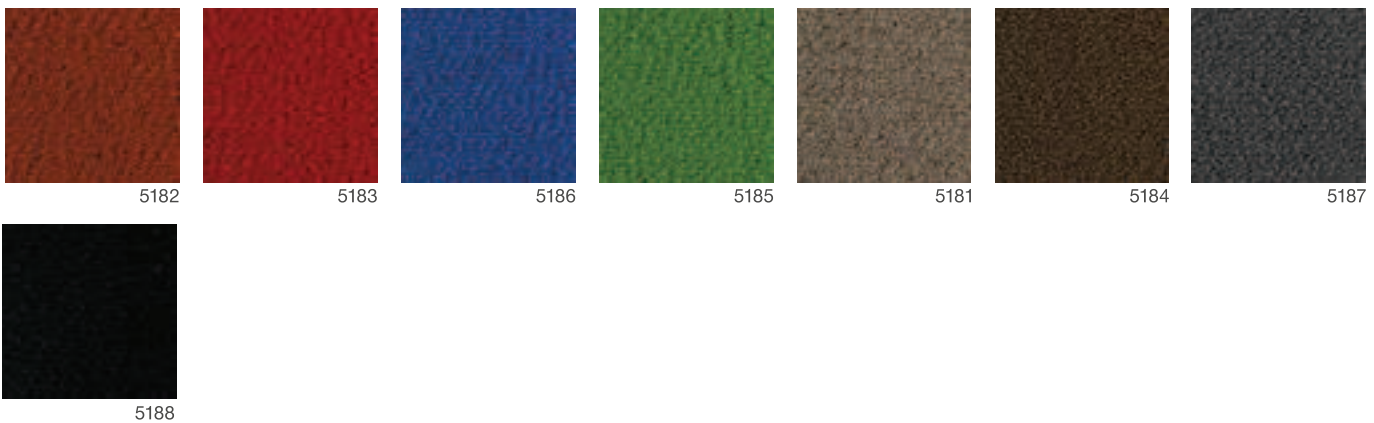
D/DENIM

90% pure new wool, 10% FR viscose / Abrasion resistance 40.000
 Martindale / Flammability BS EN 1021 - 1 : 2006, BS EN 1021 - 2 : 2006,
 BS EN 7176 : 2007 low hazard, BS 5852 : 2006 section 4 ignition
 source 5, BS 7176 : 2007 medium hazard



D/MONROE

93% pure new wool, 3% polyamide, 4% polyester / Abrasion resistance 50.000 Martindale
 Flammability BS EN 1021 - 1 : 2006, BS EN 1021 - 2 : 2006, BS 7176 : 2007 low hazard,
 UNI 915 classe 1 IM, BS 5852 : 2006, BS 7176 : 2007



D/24/7+

50% polyamid, 33% wool, 10% visil, 7% viscose
 Abrasion resistance 50.000 Martindale / Flammability EN 1021 - 1 : 2006,
 EN 1021 - 2 : 2006, BS 7176 : 2007 medium hazard

